



## Enterprise Erase Client – USB



## Users Guide

Tabernus  
11130 Jollyville Road, Suite 301  
Austin, Texas 78759  
1-888-700-8560

Tabernus Europe  
Suite G, Jistcourt House, Llewellyn's Quay  
Port Talbot, Neath Port Talbot, SA13 1RF  
01639-505731

## COPYRIGHT

The copyright in this User Guide is owned by Tabernus LLC – contact details as stated below:

- No part of this manual, in whole or in part, may be reproduced, transferred, copied, published, photocopied or translated without the prior agreement and explicit written permission of:

**Tabernus LLC, 11130 Jollyville Rd, Suite 203, Austin, TX 78759**

- All brand or product names mentioned herein are trademarks or registered trademarks of their respective holders.
- Tabernus LLC retains the right to make alterations to the content of this User Guide without the obligation to inform third parties.
- Use of Tabernus Enterprise Erase is subject to the terms and conditions entered into between Tabernus LLC and their users.

Access to this User Guide is strictly limited to those organizations and their duly authorized employees who have been granted written access to this User Guide. If you are not duly authorized by Tabernus LLC through your employer to access this User Guide, kindly advise [support@tabernus.com](mailto:support@tabernus.com).

# Table of Contents

- 1 Product Features ..... 4
  - 1.1 Description ..... 4
  - 1.2 How Enterprise Erase Client USB Works ..... 4
  - 1.3 Enterprise Erase Client Software Features ..... 4
  - 1.4 System Requirements ..... 5
    - USB Requirement ..... 5
    - Target or Client Computer Minimum Requirements ..... 5
- 2 Setting up Enterprise Erase Client - USB ..... 5
  - 2.1 Download Software ..... 5
  - 2.2 Configure USB with Enterprise Erase USB Installer ..... 6
    - 2.2.1 Installing to a USB Key ..... 6
  - 2.3 Add Licenses to USB Device ..... 7
  - 2.4 Generate a Response Key from Tabernus Customer Portal ..... 8
  - 2.5 Possible USB Key Errors ..... 11
- 3 Operating Enterprise Erase Client - USB ..... 12
  - 3.1 Starting Enterprise Erase Client ..... 12
  - 3.2 Erasing Hard Drives from Client ..... 13
  - 3.3 Retrieving Data Erasure Reports ..... 13
  - 3.4 Client Interface: Features Explained ..... 13
    - 3.4.1 Information Parameters ..... 13
    - 3.4.2 Client Main Window: Buttons and Popups ..... 14
    - 3.4.3 Client Main Window: Title Bar Menu ..... 15
- 4 Service and Support ..... 15



# 1 Product Features

## 1.1 Description

Enterprise Erase Client for USB allows data security professionals and service teams to convert a common USB 2.0 thumb drive into a data erasing device for x86 based computers.

Additional key highlights:

- Convert USB device to boot installer
- Capable of erasing most drive types (SATA, IDE, SCSI, SAS, FC, USB and Firewire)
- Configurable DoD, NIST SP 800-88, 1 Pass and others
- Can be deployed and activated on your hardware
- Collect data erasure reports in various formats
- Single USB drive can start on one system and move to other systems

## 1.2 How Enterprise Erase Client USB Works

Enterprise Erase Client for USB allows for erasure of desktops, laptops, and servers through a USB thumb drive. Once the USB drive is set up and properly

1. Plug in USB to Target Computer
2. Set Boot order to USB
3. Boot
4. Tabernus Enterprise Erase Client
  - (1) Select Drives
  - (2) Hit Erase
5. (option) Move on to other computers
6. Collect report once complete

## 1.3 Enterprise Erase Client Software Features

- Intuitive operator interface
- Visual Pass/Fail Notification
- Asset Management Logging Capability
  - System Serial
  - Asset Number
  - Processor Make/Model/Frequency
  - Number of Processors
  - Memory Size/Speed
  - Number of Memory Modules
  - Hard Drive Make/Model/Size/Type
  - Hard Drive Serial Number
  - And many more...
- Configurable Disk Erasing Features
  - DOD level 3, 5220-22M compliant disk sanitizer
  - Single Pass, 3 Pass and 7 Pass
  - Sector Viewer to physically inspect data on any drive on any client
  - Sector Snapshot reporting to sample drives after sanitization
- Reporting

## 1.4 System Requirements

### USB Requirement

- USB 2.0
- Capacity: 1 Gigabyte or greater (preferred)

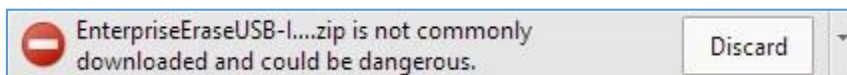
### Target or Client Computer Minimum Requirements

- IBM-compatible PC with a Pentium or AMD processor
- Minimum 256 MB
- USB 2.0
- Ability to boot from USB
- Monitor, Keyboard, Mouse

## 2 Setting up Enterprise Erase Client - USB

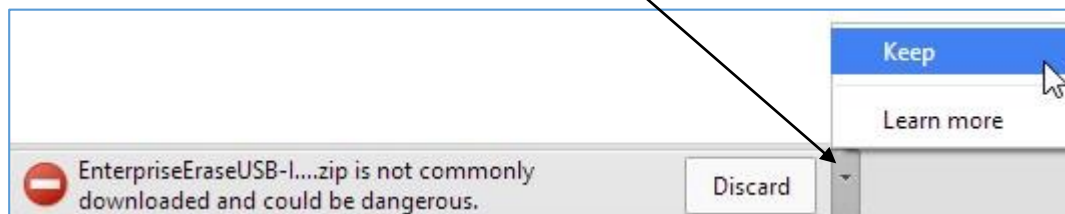
### 2.1 Download Software

1. On a Windows based system, **Download Enterprise Erase Client – USB** from Tabernus provided web link.
2. On some Windows settings you may receive an error message about the downloaded file:



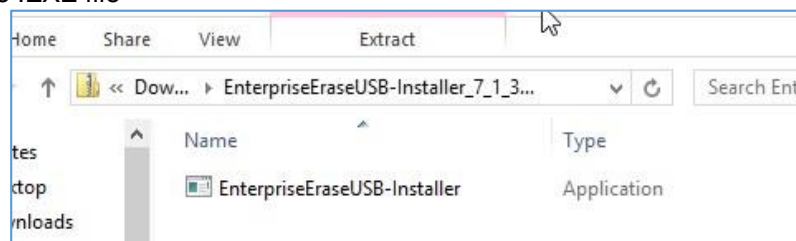
**Figure 1: Downloaded File Message**

Click the small arrow to the right and elect to keep the file.



**Figure 2: Keep the File**

3. Insert USB thumb Drive into system.
4. **RUN** software .EXE file



**Figure 3: Run Installer**

## 2.2 Configure USB with Enterprise Erase USB Installer

### 2.2.1 Installing to a USB Key

1. Enterprise Erase USB Installer will launch.
2. Select desired USB for the installation, then click **Install**. See below figure.

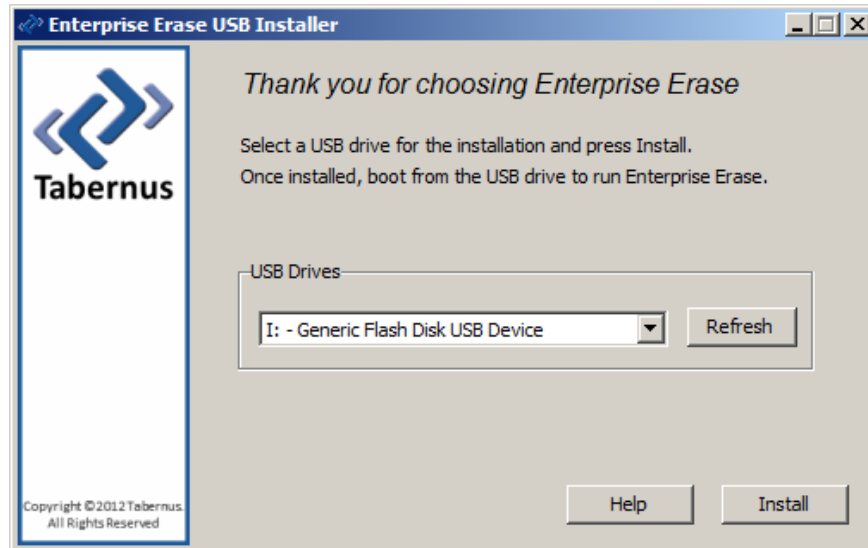


Figure 4: Installing USB Client onto USB Key

3. The process will successfully complete with message. See below figure.

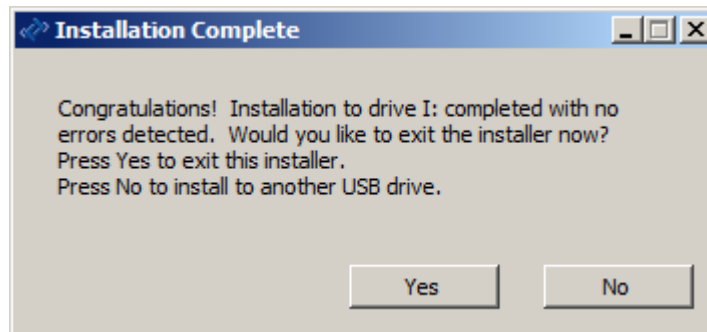


Figure 5: Completed Successful Installation

4. Press **Yes** to Exit the installer. Or, Press **No** to install additional USB drives.

## 2.3 Add Licenses to USB Device

1. **Open** the USB thumb drive to view its folder contents.
2. **Run Tabernus License Wizard** from USB file folder



Figure 6: License Wizard

3. Enter the number of licenses you would like to upload on your USB device.

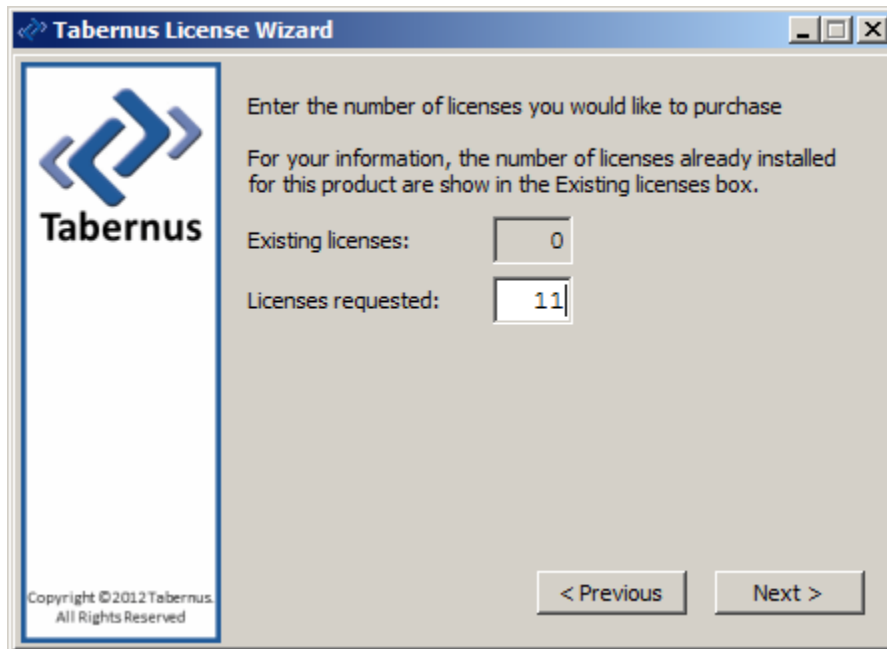
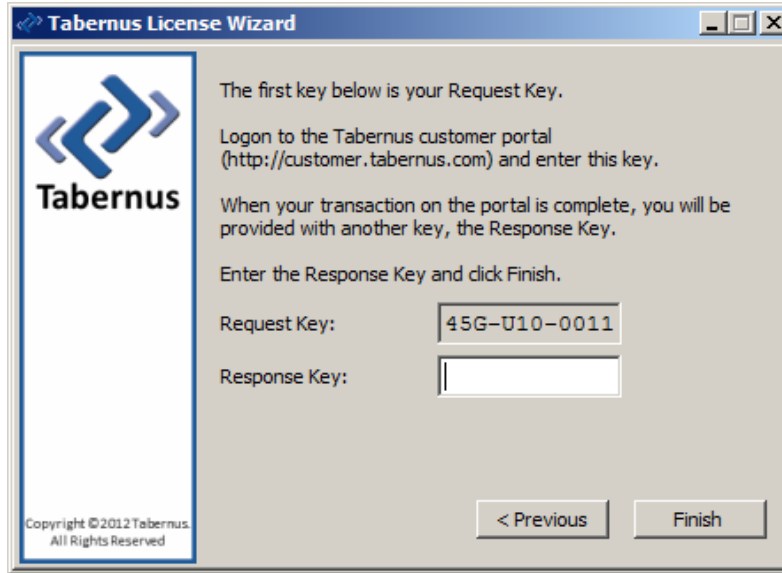


Figure 7: License Quantity Dialog

- The Tabernus License Wizard will then generate a Request Key.



**Figure 8: Response Key Entry Dialog**

- Do not close the Tabernus License Wizard until you have entered the Response Key.

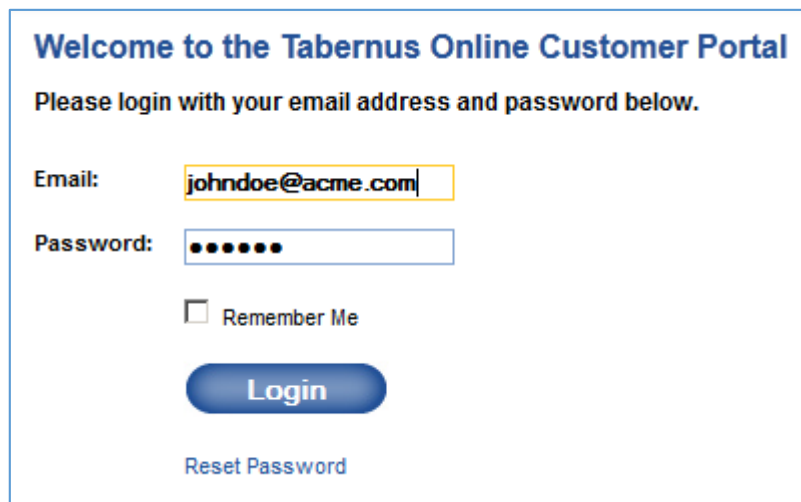
6. Log on to Tabernus customer portal at <http://customer.tabernus.com> and enter the Request Key. The customer portal will provide another key, the Response Key that you will enter and click Finish.

7. It is best to enter the *Request Key* using UPPERCASE letters and manually enter the hyphens: this is *not* required when entering the *Response Key* (below).

*Note: request and response keys do not use the letter "O" to avoid confusion with the number zero.*

## 2.4 Generate a Response Key from Tabernus Customer Portal

- Using a computer that has access to the internet launch a web browser and enter the URL [http://customer.tabernus.com/](http://customer.tabernus.com)
- Login to your customer portal (See your manager or admin for the login credentials).



**Figure 9: Log in to Customer Portal**



3. Select *Request License By Key* icon



**Figure 10: Select/Click Request License by Key**

4. Enter the License Request Key provided by Tabernus application. **Use UPPERCASE letters and enter hyphens (-): all "O's" are 'zeroes'.**
5. Enter software revision. Software Revision entry is NOT optional.
6. Optional: Enter Group and Memo comment.

### Request License By Key

<b>Dell Inc</b>	
Status:	Active
License Balance:	12500

License Request Key	<input style="width: 90%;" type="text" value="45G-U10-0011"/>
Software	Choose a Software Revision ▼
Group	General ▼
Memo	<div style="border: 1px solid #ccc; height: 40px; width: 100%;"></div>

**Figure 11: Entering Request Key in Portal**

7. Click **Request** button (ONLY CLICK ONCE). A Response Key will be provided in the next screen. A blue border around the Request button indicates it has been selected – repeated/additional clicks will add additional requests!

8. Enter **Response Key** in Tabernus License Wizard. Click **Finish**.

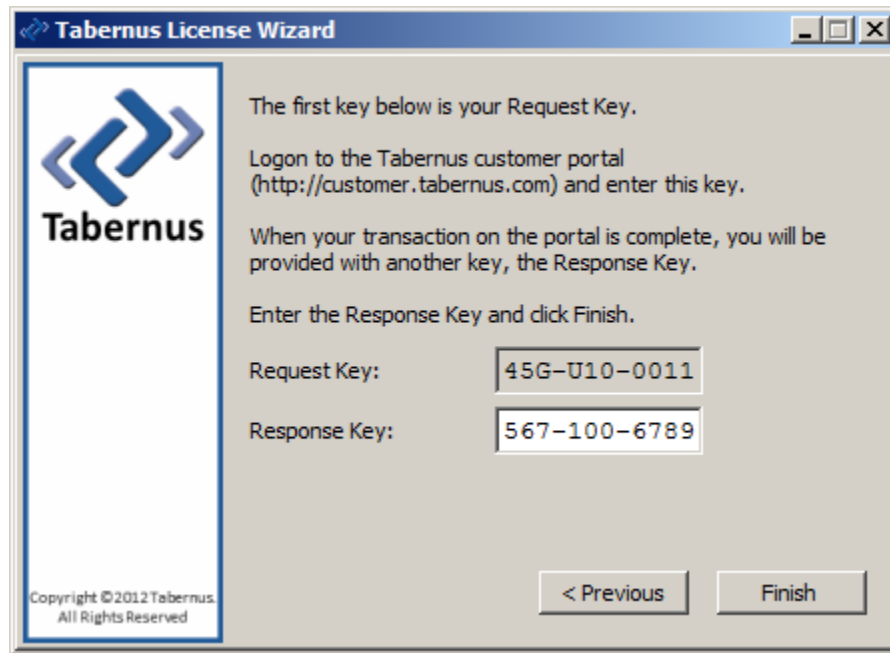


Figure 12: Entering Response Key

Note: The Licensing Wizard should *not* be closed during the licensing process (exchanging keys in the Customer Portal): this will possibly cause additional challenge keys to be presented.

9. Safely Remove the USB drive from the computer.



Figure 13: Safely Remove USB from the notification box

## 2.5 Possible USB Key Errors

Some USB keys have partitioning 'errors' that although may not show in *normal* use, may cause issues when installing/licensing the USB Erase software.

This can be circumvented by re-partitioning/formatting the USB key. Two methods are provided below to perform this task.

**Method One:** Download the following tool:-

<http://tabernusupport.freshdesk.com/solution/categories/67190/folders/111227/articles/3000007433-hp-usb-disk-storage-format-tool>

**Method Two:** DiskPart using the Windows Command Line; go to the URL (below) and follow the instructions.

<http://tabernusupport.freshdesk.com/solution/categories/67190/folders/111227/articles/3000002552-using-diskpart-to-re-partition-a-usb>

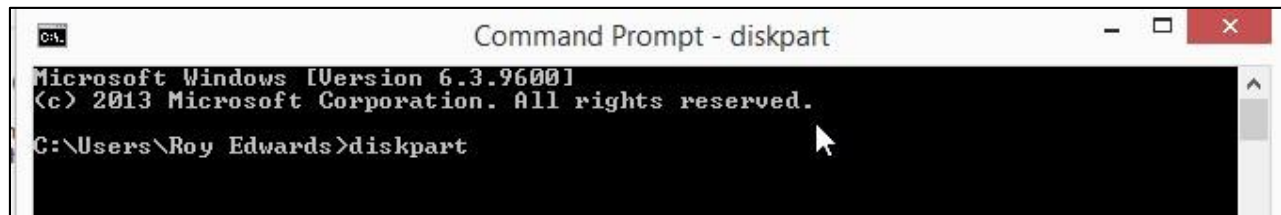


Figure 14: Windows DiskPart Utility

## 3 Operating Enterprise Erase Client - USB

### 3.1 Starting Enterprise Erase Client

1. Insert USB into target client or computer that you wish to erase.
2. Configure the target client to change the boot order to USB boot. Boot system and select the appropriate BIOS setting function key or Boot Order function key at the BIOS page. This function key varies with OEM and system type. The function key may be ESC key, F9, F10, or F12.
3. Once USB boot is configured on the client. Boot or Restart the target client.
4. Enterprise Erase Client software will automatically load on to the target client and display on the screen.

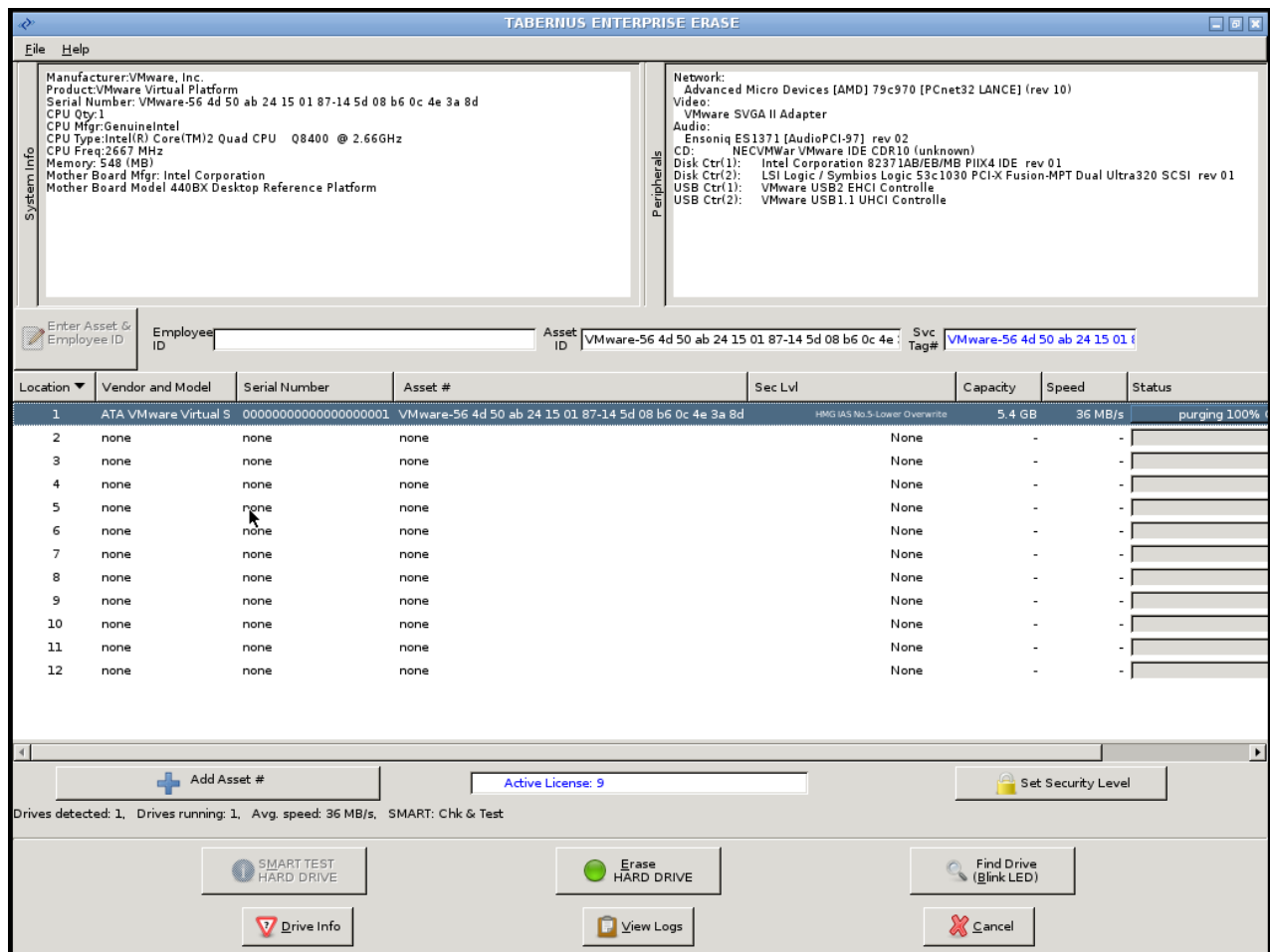


Figure 15: Enterprise Erase USB GUI

## 3.2 Erasing Hard Drives from Client

1. With mouse or touch pad, **Select or highlight drive(s)** that you desire to erase on the Enterprise Erase GUI.
2. Once selected, **click Erase Hard Drive** button to initiate the erasure.
3. A Set Security Level pop-up window will appear. Select the desired data erasure method and click OK button.

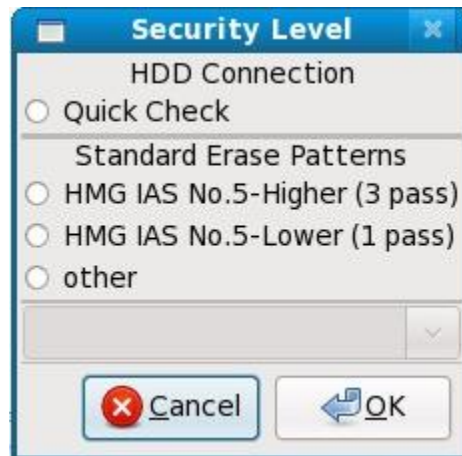


Figure 16: Set Security Level

4. The erasure process will start on the selected drives.
5. If erasing multiple targets using a single USB thumb drive, the Enterprise Erase software will provide a pop-up window instructing you when it is permissible to remove the USB drive and go on to the next target erasure.

## 3.3 Retrieving Data Erasure Reports

1. When data erasure for client is complete, the highlighted drives being processed will display a GREEN highlighted color signifying a successful erasure or a RED highlighted color signifying an unsuccessful erasure against the selected data erasure standard.
2. Ensure the USB thumb drive is inserted in the client system.
3. Reports will automatically be retrieved and stored on the USB thumb drive in a folder
4. Data Erasure Reports will be provided in xml, text, and PDF report file formats.

## 3.4 Client Interface: Features Explained

### 3.4.1 Information Parameters

**Location:** This list the drive location numerically from 1 to 12.

**Vendor and Model:** This displays the Hard Drives Vendor and Model.

**Serial Number:** This displays the Hard Drive Serial Number

**Asset #:** This is a unique identifier entered or scanned by the operator for tracking purposes.

**Security:** This displays the security level assigned to each hard drive. Drives within each client may have their own unique security level. If different erasure levels are specified for different drives within a client it will display 'mixed'.

**Capacity:** This displays the hard drive capacity for each disk install in the client system.

**Speed:** This displays the speed that the disk purge is currently running at.

**Status:** This displays the progress of the purge and estimated time to completion of each individual drive on the client system. This also displays the drives formatting details when the drive is idle.

The following is a list of options that can be accessed by **right clicking** on any of the drives listed.

**View Sectors:** This displays a Sector View. It is used to verify that the drive is clear of readable data.

**View Grown Defects:** This displays a list of all drive defects listed in the Grown Defect List.

### 3.4.2 Client Main Window: Buttons and Popups

**Try to Connect:** If the connection to the Server is lost, this option allows you to re-establish the connection and sync asset information.

**Enter Asset & Employee Info:** This allows the operator to change the client Asset Information. This will be included in Erasure Certificate. The operator can also enter their Employee ID for reporting purposes.

**Add Asset:** Allows the operator to enter the Asset Number for selected drives.

**Set Security Level:** This allow the user to assign various erasure levels to various drives. That is one drive can execute a DOD 5220.22-M, while another drive executes another sanitization standard. Quick Check runs a quick diagnostic on the drive to make sure the drive is good.

**Edit & Log Asset:** This brings up a list of the client systems asset information. This option allows the operator to manual change any of the fields. The details will be included in the Erasure Certificate (Figure below).

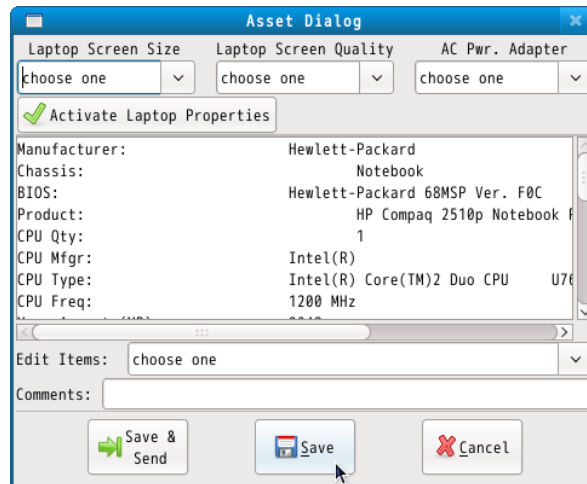


Figure 17: Asset Dialog Window

**SMART Test Hard Drive:** Runs a test on the selected drive to alert the operator of an impending drive failure.

**Erase Hard Drive:** Executes the sanitizing process defined by the parameters in Set Security Level.

**Find Drives (Blinking LED):** This blinks the access light of the selected Hard Drive. This only works if the system has a Hard Drive Access LED.

**Drive Info:** This displays detailed information on the selected drive. The details include Vendor/Model, Serial Number, Capacity, Location, SMART Attributes and Test Log. (Figure below).

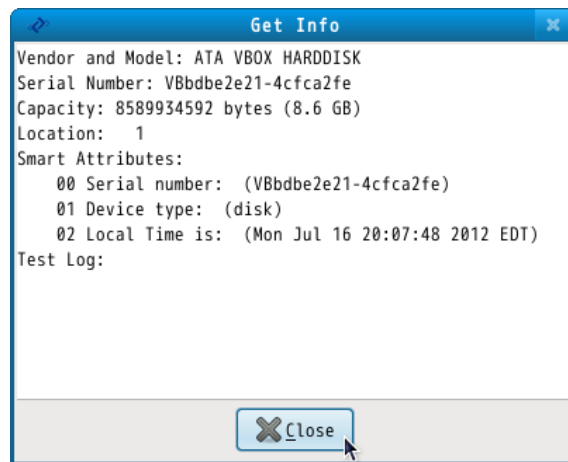


Figure 18: Drive information Window

**View Logs:** This allows the operator to view a log of all assets logged and hard drives sanitized by the software; this data resides within the csv directory.

**Cancel:** This will cancel any tests being performed on a selected drive

### 3.4.3 Client Main Window: Title Bar Menu

The Title Bar Menu on the client side includes the following options: File, Help, and Advanced.

**File:** This drop down menu has the option to View Logs, Quit or Shutdown the client system.

**Help:** This drop down menu has the option for About. About displays the software version you are running.

**Advanced:** Double click "Advanced" to manually upload the Erasure Report or Re-Title Report, The Re-Title Report option even provides the option to add a custom logo to the PDF Report (See Figure below).

## 4 Service and Support

For service or support issues, please contact Tabernus Support at:

Email: [support@tabernus.com](mailto:support@tabernus.com)

Phone: 888.700.8560, Option 2 (US)

Phone: +44 (0) 1639 505 731 Option 2 (UK)

Online support: <http://support.tabernus.com>